



**Surface Measurement Systems**  
World Leader in Sorption Science

## Understanding Surface Properties of Solid Materials

iGC-SEA is the only commercially available system using a chromatographic principle to characterize a solid surface's properties.

During an inverse gas chromatography (iGC) experiment, the sample's surface is screened using different probe molecules (solvents). The sample's interaction with these solvents allows in-depth investigation of its thermodynamics and physico-chemical properties.

# iGC-SEA

Inverse Gas Chromatography-  
Surface Energy Analyzer



### 1 Surface Energetics

iGC is the most successfully and commonly used technique for surface energy analysis of powders and fibers.

### 2 Processing Performance

iGC can be used for QC analysis due to it has excellent reproducibility (1-2%RSD).

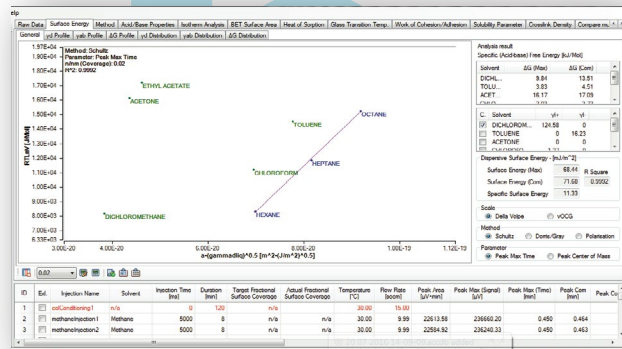
### 3 Adhesion Studies

- Adhesion is crucial in reinforced composites.
- Tablet strength is controlled by surface energy.
- Blending performance analysis.

### 4 BET Surface Areas Analysis

Very accurate (~1%RSD) BET surface area analysis in 0.1 - 100m<sup>2</sup>/g surface area range.

### iGC-SEA Analysis Software



[sales@surfacemeasurementsystems.com](mailto:sales@surfacemeasurementsystems.com)

[www.surfacemeasurementsystems.com](http://www.surfacemeasurementsystems.com)

